



REMOTE CONTROL

 **MAKBRENT**
tracking the future



MAK 75 ***EVO.1***

THE PERFECT MACHINE FOR
ALL SITE OPERATIONS

Remotely controlled from your best point of view

**Best view,
full control**



✓ **HIGH PRODUCTIVITY**

Excavations made at 50 to 200 m/h ensure a high productivity, resulting in reduced times and costs.

✓ **SAFETY AND COMFORT FOR THE OPERATOR**

The remote control allows you to work in **total safety**, reducing exposure to work-related dangers.

✓ **PRECISE AND CLEAN READY-TO-USE TRACE**

The machine makes it possible to trace a **perfect clean track**, even with curved sections and challenging grounds.

MAK 75 EVO.1

OPTICAL FIBER

TELECOMMUNICATIONS

BUILDINGS

AGRICULTURE

WATER NETWORKS

ELECTRICAL GRIDS

OIL&GAS

PARKS

FORESTRY



CONSTRUCTION



MINING



AGRICULTURE



PARKS

MAK 75 EVO.1 is a multifunctional machine capable of carrying out all site operations. Thanks to the wide range of rapid hook-on accessories, it permits:

- ✓ Wheel digging
- ✓ Chain digging
- ✓ Loading and unloading with bucket
- ✓ Asphalt milling
- ✓ Site cleaning using a sweeper
- ✓ Lifting by forks
- ✓ Moving materials with blade
- ✓ Using attachments with the adapter
- ✓ Closing excavation using a mixing bucket

QUICK COUPLING

Changing equipment is very easy thanks to the hydraulic quick coupling, which is operated by the remote control.



REMOTE CONTROL

MAK 75 EVO.1 works with a remote control, avoiding the presence of an operator on board hence making it possible to monitor its work more closely.



ADVANTAGES VS TRADITIONAL MACHINERY

BUSINESS

- Higher **earnings**
- Lower **work duration**
- Lower **management costs**
- Lower **maintenance**
- Lower **stress for traffic blocks**, delays and fees to be paid

WORKING SITE

- Higher **digging precision**
- Higher **speed**
- Higher **efficiency**
- Lower **road obstruction**
- Lower **labour**

ENVIRONMENT

- Lower **environmental impact**
- Lower **waste material** to dispose of
- Lower **fuel use**

PEOPLE

- Higher **comfort for the operator**
- Higher **security**
- Easier** to use



01 RADIO-CONTROL TRENCHER

Using the remote control to manage the machine operations makes it possible to eliminate the need for manual intervention and reduce exposure to risks. It is so possible to check and change in real time any functions based on the different requirements of construction sites.



02 REMOTE MONITORING SYSTEM MAKGUARD

The satellite tracking system allows to remotely control the machine location and operations through maps, tables and intuitive diagrams. Operators can analyse system data to schedule interventions, preventive maintenance and ensure maximum performance.



03 INTELLIGENCE GUIDE FOLLOWING TRACK

The IGFT technology - Intelligence Guide Following Track - allows the machine to independently follow a path and adapt the digging speed to the effort required to move forward, improving productivity and efficiency. This way, even inexperienced operators can obtain the best digging results and performance.

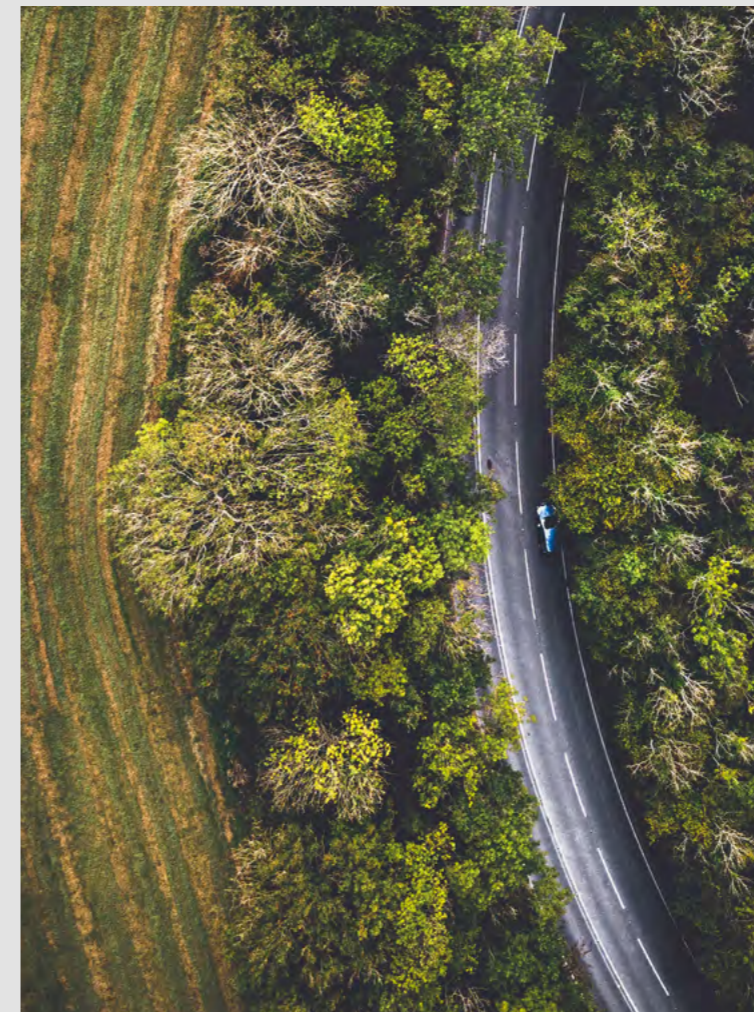


04 LOW EMISSIONS ENGINE SYSTEM

All MakBrent machines come equipped with selected engines according to the most stringent criteria of:

- reliability
- cost effectiveness
- level of emissions

All machine systems, from the hydraulic devices to the controls, are designed and manufactured to **reduce environmental impact** to a minimum and lower fuel costs.



Key Points

01 DEUTZ ENGINE

DEUTZ is one of the most important manufacturers of drive systems in the international market, their products satisfy the highest technical and engineering requirements of the field.



03 LIFTING SYSTEM

The design of the lifting arms permits an optimal management of loads even at maximum working height, an engineering implementation with the purpose of making loading and unloading operations easier.



02 HYDRAULIC SYSTEM

The hydraulic system of MAK 75 EVO.1 has been designed to guarantee the highest productivity in order to maximise efficiency. The set-up includes several major advantages:

- a 20% increase of traslation speed;
- higher fluidity, speed and precision;
- optimal levels of hydraulic oil temperature;
- simplified access to distributors for maintenance operations, made easier thanks to the side opening.



04 OPTIMISED PLANNING

The structure of the machine has been optimised with the strategic placement of the motor oil temperature and level indicator, made more visible to be instantly monitored. The access to the fuel tank is also extremely practical due to an opening on the left side of the frame.



05 ELECTRONICS

The latest generation electronic control unit permits to maximise the functions of the optional kits:

- IGFT, for the automatic guide;
- RMS "Modem GPRS", for the remote monitoring of the machine position and data.

The 4" colour display, placed on the frame of the machine, allows the activation and configuration of the different functions, such as the automatic guide or the auxiliary electrical outlet, in addition to the check-up of most of the functioning parameters.

Attachments

Watch the VIDEO



MWS Conveyor

Wheel saw with conveyor belt



ADP 01

Adapter



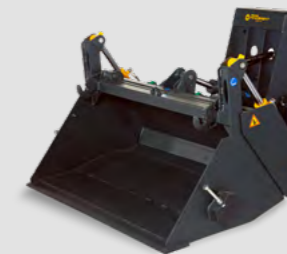
MWS

Wheel saw



BK 150

Multifunctional bucket



MCT

Chain trencher



MSW

Sweeper



MRP

Road planer



MBM

Mixing bucket



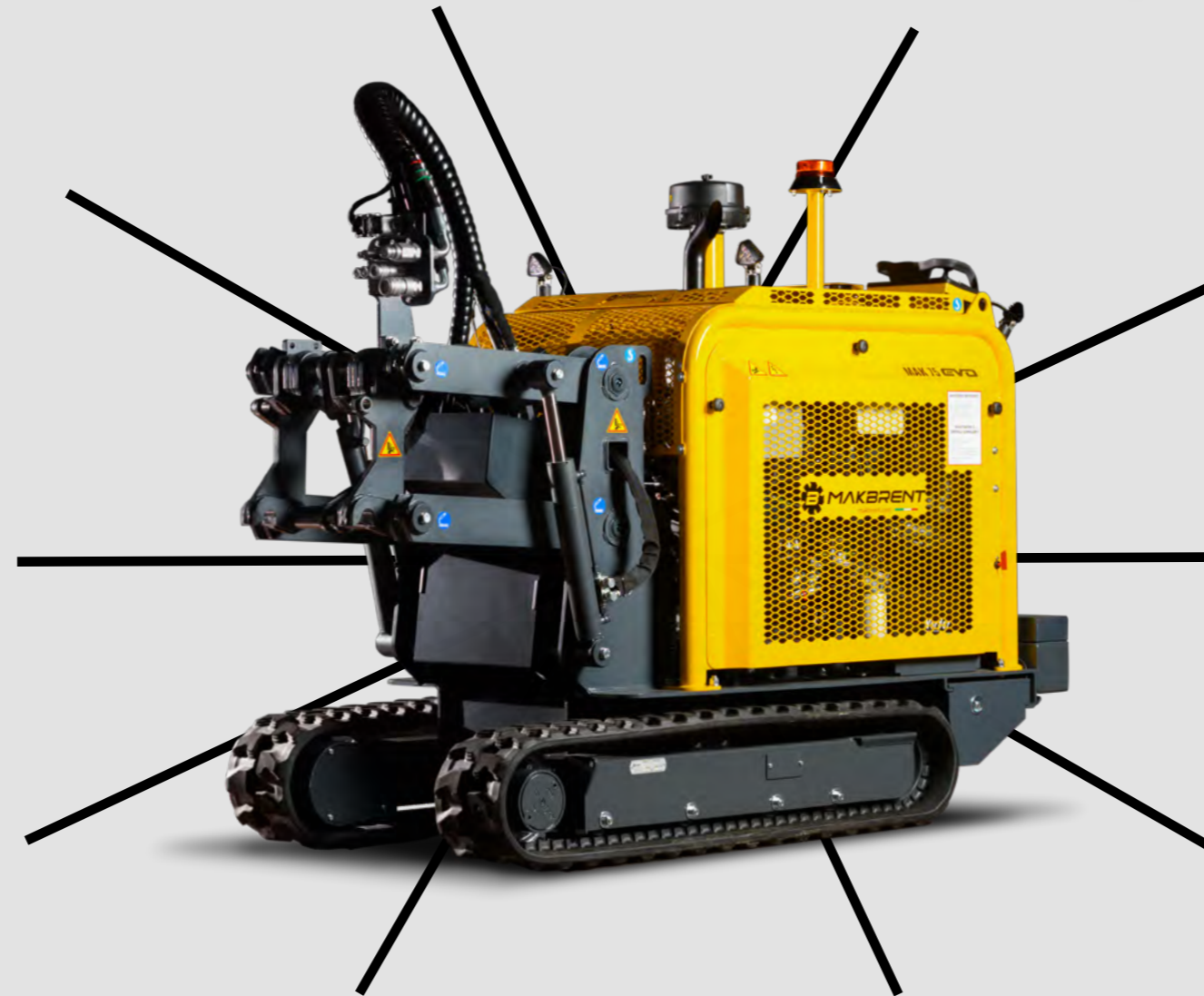
DB

Blade



FK 01

Lifting forks



The machine

MAK 75 EVO.1 machine is robust, ecological, economical and versatile, suitable for all construction site operations.



STANDARD CONFIGURATION

- ✓ 2 led work lights
- ✓ 3 auxiliary hydraulic clutches (1 proportional and 2 on/off on the remote control)
- ✓ 1 high flow socket to action the attachments
- ✓ 1 electrical 12 V outlet actionable on the display

COMMANDS

- ✓ Remote control with electro-actuated proportional servo controls (PPC)
- ✓ Adjustment of lateral traslation and digging depth directly from the remote control

SECURITY SYSTEM

- ✓ All movements of the machine can be controlled through the buttons on its body and the remote control.

The attachments

MWS 630

WHEEL SAW



EXCAVATION MEASURES

Width
from 50 to 200 mm
Depth
from 200 to 630 mm

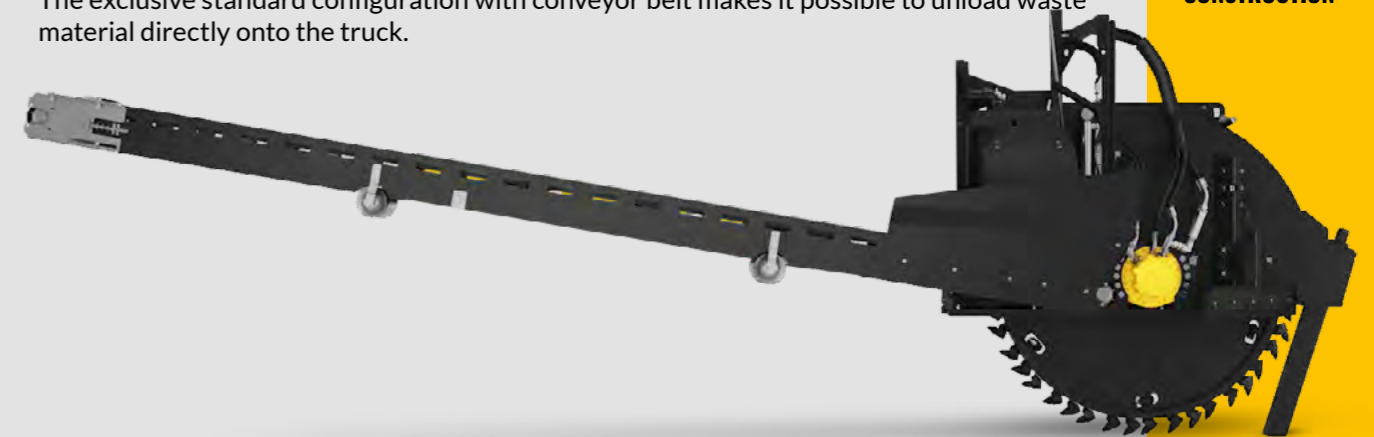
STANDARD CONFIGURATION

- ✓ Floating trench cleaner
- ✓ Remote control with:
 - » Hydraulic digging depth adjustment
 - » Hydraulic side shift

MWS 540 CONVEYOR

WHEEL SAW

The exclusive standard configuration with conveyor belt makes it possible to unload waste material directly onto the truck.



CONVEYOR LENGHTS

Short conveyor lenght
4,2 M
Long conveyor lenght
5,6 M

EXCAVATION MEASURES

Width
from 30 to 200 mm
Depth
from 200 to 540 mm

STANDARD CONFIGURATION

- ✓ Floating trench cleaner
- ✓ Remote control with:
 - » Hydraulic digging depth adjustment
 - » Hydraulic side shift



CONSTRUCTION

OPTICAL FIBER

TELECOMMUNICATIONS

ELECTRICAL NETWORKS

WATER NETWORKS



CONSTRUCTION

OPTICAL FIBER

TELECOMMUNICATIONS

ELECTRICAL NETWORKS

WATER NETWORKS

MWS 450

WHEEL SAW



EXCAVATION MEASURES

Width
from 50 to 140 mm
Depth
from 200 to 450 mm

STANDARD CONFIGURATION

- ✓ Floating trench cleaner
- ✓ Remote control with:
 - » Hydraulic digging depth adjustment
 - » 9° hydraulic position of the wheel for an easy curvilinear digging

MWS 400

WHEEL SAW



EXCAVATION MEASURES

Width
from 30 to 120 mm
Depth
from 200 to 400 mm

STANDARD CONFIGURATION

- ✓ Floating trench cleaner
- ✓ Remote control with:
 - » Hydraulic digging depth adjustment
 - » Hydraulic side shift
 - » 12,5° hydraulic position of the wheel for an easy curvilinear digging



CONSTRUCTION

OPTICAL FIBER

TELECOMMUNICATIONS

ELECTRICAL NETWORKS

WATER NETWORKS



CONSTRUCTION

OPTICAL FIBER

TELECOMMUNICATIONS

ELECTRICAL NETWORKS

WATER NETWORKS

MCT 120

CHAIN TRENCHER

Suitable for digging on topsoil or mixed soils.



EXCAVATION MEASURES

Width
200, 300, 400 mm
Depth
up to 1200 mm

STANDARD CONFIGURATION

- ✓ Hydraulic side shift

MCT 140

CHAIN TRENCHER

Suitable for digging on topsoil or mixed soils.



EXCAVATION MEASURES

Width
200, 300 mm
Depth
up to 1400 mm

STANDARD CONFIGURATION

- ✓ Hydraulic side shift



AGRICULTURE



PARKS

FORESTRY

WATER NETWORKS

GAS PIPELINES



AGRICULTURE



PARKS

FORESTRY

WATER NETWORKS

GAS PIPELINES

MRP 20.20

ROAD PLANER

Road planer for excavation preparation. Removes asphalt or concrete layers with a constant depth.



MILLING MEASURES

Width
200 mm
Max depth
200 mm

STANDARD CONFIGURATION

- ✓ Hydraulic depth adjustment
- ✓ Hydraulic side shift

OPTIONAL ON REQUEST

- ✓ Hydraulic tilt adjustment
- ✓ Water kit



CONSTRUCTION

OPTICAL FIBER

TELECOMMUNICATIONS

ELECTRICAL NETWORKS

WATER NETWORKS

MRP 25.15

ROAD PLANER

Road planer for excavation preparation. Removes asphalt or concrete layers with a constant depth.



MILLING MEASURES

Width
250 mm
Max depth
130 mm

STANDARD CONFIGURATION

- ✓ Hydraulic depth adjustment
- ✓ Hydraulic side shift

OPTIONAL ON REQUEST

- ✓ Hydraulic tilt adjustment
- ✓ Water kit



CONSTRUCTION

OPTICAL FIBER

TELECOMMUNICATIONS

ELECTRICAL NETWORKS

WATER NETWORKS

MRP 40.15

ROAD PLANER

Road planer for excavation preparation. Removes asphalt or concrete layers with a constant depth.



MILLING MEASURES

Width
400 mm
Max depth
130 mm

STANDARD CONFIGURATION

- ✓ Hydraulic depth adjustment
- ✓ Hydraulic side shift

OPTIONAL ON REQUEST

- ✓ Hydraulic tilt adjustment
- ✓ Water kit



CONSTRUCTION

OPTICAL FIBER

TELECOMMUNICATIONS

ELECTRICAL NETWORKS

WATER NETWORKS

MRP 50.20

ROAD PLANER

Road planer for excavation preparation. Removes asphalt or concrete layers with a constant depth.



MILLING MEASURES

Width
500 mm
Max depth
170 mm

STANDARD CONFIGURATION

- ✓ Hydraulic depth adjustment
- ✓ Hydraulic side shift

OPTIONAL ON REQUEST

- ✓ Hydraulic tilt adjustment
- ✓ Water kit



CONSTRUCTION

OPTICAL FIBER

TELECOMMUNICATIONS

ELECTRICAL NETWORKS

WATER NETWORKS

MRP 100.20

ROAD PLANER

Road planer for excavation preparation. Removes asphalt or concrete layers with a constant depth.



MILLING MEASURES

Depth
1000 mm
Max width
170 mm

STANDARD CONFIGURATION

- ✓ Hydraulic depth adjustment
- ✓ Hydraulic side shift

OPTIONAL ON REQUEST

- ✓ Hydraulic tilt adjustment
- ✓ Water kit



CONSTRUCTION

OPTICAL FIBER

TELECOMMUNICATIONS

ELECTRICAL NETWORKS

WATER NETWORKS

MBM 150

MIXING BUCKET

It allows on-site concrete production to close excavations immediately. It is mandatory to add the ADP 01 adapter.



DATA

- ✓ Capacity 150 l
- ✓ Bucket width 1000 mm
- ✓ Total width 1265 mm



CONSTRUCTION

OPTICAL FIBER

TELECOMMUNICATIONS

ELECTRICAL NETWORKS

WATER NETWORKS

MBM 300

MIXING BUCKET

It allows on-site concrete production to close excavations immediately. It is mandatory to add the ADP 01 adapter.



DATA

- ✓ Capacity 350 l
- ✓ Bucket width 1350 mm
- ✓ Total width 1630 mm



CONSTRUCTION

OPTICAL FIBER

TELECOMMUNICATIONS

ELECTRICAL NETWORKS

WATER NETWORKS

MBM 450

MIXING BUCKET

It allows on-site concrete production to close excavations immediately. It is mandatory to add the ADP 01 adapter.



DATA

- ✓ Capacity 460 l
- ✓ Bucket width 1460 mm
- ✓ Total width 1760 mm



CONSTRUCTION

OPTICAL FIBER

TELECOMMUNICATIONS

ELECTRICAL NETWORKS

WATER NETWORKS

MSW 1500

SWEEPER

Accessory to quickly remove debris after operations.
It is mandatory to add the multifunctional bucket BK 150.



DATA

- ✓ Width 1500 mm
- ✓ Brushes diameter 600 mm

OPTIONAL ON REQUEST

- ✓ Hydraulic tilt adjustment
- ✓ Water kit

BK 150

MULTIFUNCTIONAL BUCKET

Designed to be mechanically coupled to the sweeper to collect, grab and transport material during site cleaning.



DATA

- ✓ Width 1500 mm
- ✓ Capacity 350 l
- ✓ Opening 0 - 75°



CONSTRUCTION

OPTICAL FIBER

TELECOMMUNICATIONS

ELECTRICAL NETWORKS

WATER NETWORKS



CONSTRUCTION

OPTICAL FIBER

TELECOMMUNICATIONS

ELECTRICAL NETWORKS

WATER NETWORKS

DB 1500

DOZER BLADE

Ideal blade to close trenches or backfill and lay materials.



DATA

- ✓ Max angle +/- 30°
- ✓ Working width at max angle 1300 mm
- ✓ Total width 1500 mm

DBA 1800

DOZER TILT BLADE

Ideal blade for earthworks, to close trenches or backfill and lay materials.



DATA

- ✓ Rotating blade max angle +/- 30°
- ✓ Tilt blade max inclination +/- 15°
- ✓ Working width at max angle 1558 mm
- ✓ Total width 1800 mm



CONSTRUCTION



AGRICULTURE

OPTICAL FIBER

TELECOMMUNICATIONS

ELECTRICAL NETWORKS

WATER NETWORKS



CONSTRUCTION



AGRICULTURE

OPTICAL FIBER

TELECOMMUNICATIONS

ELECTRICAL NETWORKS

WATER NETWORKS

FK01

FORKS

Designed to move palletized materials, they are suitable for the easy handling of heavy materials on site. It is mandatory to add the ADP01 adapter.



DATA

- ✓ Lifting capacity 1,0 ton
- ✓ Total weight 120 kg
- ✓ Total width 1150 mm

ADP01

ADAPTER

Quick coupler that complies with norm ISO 13031, designed for the use of all standard equipment destined for mini excavators and skid-steer loaders.



CONSTRUCTION

OPTICAL FIBER

TELECOMMUNICATIONS

ELECTRICAL NETWORKS

WATER NETWORKS



CONSTRUCTION

OPTICAL FIBER

TELECOMMUNICATIONS

ELECTRICAL NETWORKS

WATER NETWORKS



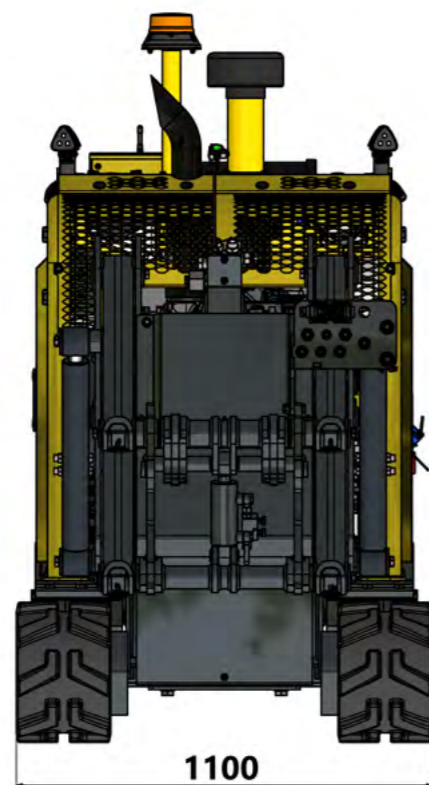
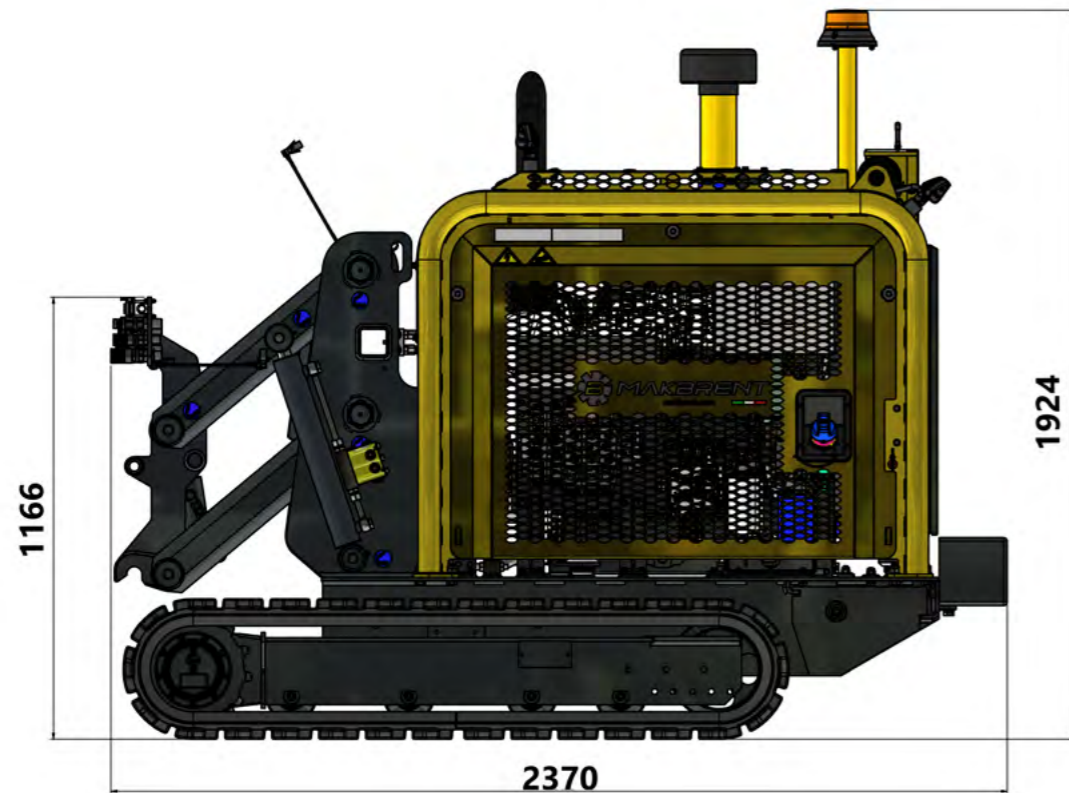
MAK 75 *EVO.1*

THE PERFECT MACHINE FOR ALL SITE OPERATIONS



Technical data and dimensions

MAK 75 EVO.1



ENGINE

| | |
|------------------------------------|------------------------|
| Engine | Deutz |
| Model | TD 2.9 L 4 |
| Emission regulation vers. EU | Stage V |
| Emission regulation vers. EXTRA EU | Stage III |
| Displacement [cm ³] | 2900 |
| N° cylinders | 4 |
| Max. Power [kW / HP] | 55,2 / 75,1 @ 2600 rpm |
| Max. net torque [Nm] | 260 |
| Aspiration | Turbocharged |
| Cooling | Glycol water |
| Starter | Electric |
| Disposition | L |
| Voltage [V] | 12 |
| Oil tank capacity [l] | 4,8 |
| Fuel | Diesel common rail |

GEARBOX

| | |
|----------------------|------------|
| Type | Two speeds |
| Working speed [km/h] | 1.4 |
| Moving speed [km/h] | 4.5 |

HYDRAULIC SYSTEM

| | |
|----------------------------------|--------------------|
| Gear pumps | 4 |
| Hydraulic oil cooling | Air / oil radiator |
| Attachment max. oil flow [l/min] | 110 @ 2600 rpm |
| Operating max. pressure [bar] | 230 |
| Hydraulic tank capacity [l] | 70 |

SIZE AND WEIGHT

| | |
|--------------------------------|--------------|
| Max. length [mm] | 2320 / 91,2" |
| Max. width [mm] | 1100 / 43,2" |
| Max. height [mm] | 1910 / 75,1" |
| Operating weight Vers. EU [kg] | 2460 |
| Operating weight EXTRA EU [kg] | 2450 |

OPTIONAL

| |
|---|
| MAKGUARD RMS satellite tracking system |
| IGFT (Intelligence Guide Following Track) semi-automatic guide system |





TRACKING THE FUTURE

We have been in pole position since 1963 but now it is our experience and enthusiasm that lead us. MakBrent is a story of all-Italian professionalism, but with an international purpose. It is the entrepreneurial choice of a young, solid and continuously growing Group. A team made up of people who always stand by their customers to contribute together towards a future of innovation and the achievement of many more exciting goals.

www.makbrent.com

MakBrent srl

Via Ponticelli, 36 - 36020 Agugliaro (VI) - Italy

P. +39 (0)445 602900 - info@makbrent.com